

# PUBLIC AUCTION SALE

HUGE PRECISION AUTOMATIC SCREW MACHINE PLANT

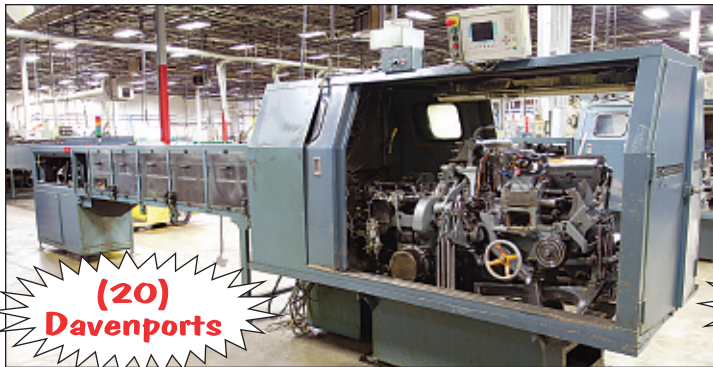
## ANDERSON FITTINGS

On Location &  
Webcast Bidding

4325 Frontage Road • Oak Forest (Chicago), IL 60452

**SALE STARTS 10:00 am CST Wednesday, March 20, 2013**

**INSPECTION: Tuesday, March 19, 8:00 am - 5:00 pm**



**(12) NEW BRITAIN Model 81, 51, 52 & 62 Automatic Screw Machines**  
**(20) DAVENPORT Model B Automatic Screw Machines with Enclosures**  
**(3) NATIONAL ACME Automatic Screw Machines • Bar Marking Machine**  
**Parts Washers • Continuous Chip Systems • WAGNER Automatic Cold Saw**  
**Screw Machine Tooling • Inspection • Forklifts • Factory Equipment • MORE**

**PLEASE BE PROMPT - MACHINERY SELLS IMMEDIATELY**

Buyer's Premium: 15% On Location, 18% Webcast

Premier License #044000209

Glenn Gray License #041000721



Lot List & Auction Calendar at:

**[www.premierarg.com](http://www.premierarg.com)**

**DON'T MISS  
THIS AUCTION**

Premier Asset Recovery Group, LLC • 77 East Palatine Road • Prospect Heights, Illinois 60070-1811  
Phone: 312-280-1234 • Fax: 312-280-1266 • Email: [info@premierarg.com](mailto:info@premierarg.com) • Website: [www.premierarg.com](http://www.premierarg.com)



# NEW BRITAIN AUTOMATIC SCREW MACHINES

## 1-1/4" NEW BRITAIN Model 81 8-Spindle Automatic

S/N 50133 Cucchi Bar Feeder, Threading, New 1995

## 1" NEW BRITAIN Model 51 6-Spindle Automatics

S/N 38104 (6) Slides, Hydraulic Threading, 1973 (rebuilt)

S/N 37807 (6) Slides, Threading Attachment, 1973

## 1-1/4" NEW BRITAIN Model 52 6-Spindle Automatics

S/N 39543 (6) Slides, Hydraulic Threading, New 1979

S/N 39239 (6) Slides, Hydraulic Threading, New 1978

S/N 38093 (6) Slides, Threading (clutch out), New 1974

S/N 37526 (6) Slides, Threading Attachment, New 1972

S/N 36594 (6) Slides, Threading Attachment, New 1968

S/N 34602 (6) Slides, Hydraulic Threading, New 1966

S/N 34599 (6) Slides, Hydraulic Threading, New 1966 (rebuilt)

S/N 34253 (6) Slides, Threading Attachment, New 1965

## 2-1/4" NEW BRITAIN Model 62 6-Spindle Automatic

S/N 40143 (6) Slides, Hydraulic Threading, New 1982



**12 NEW BRITAINS Available**



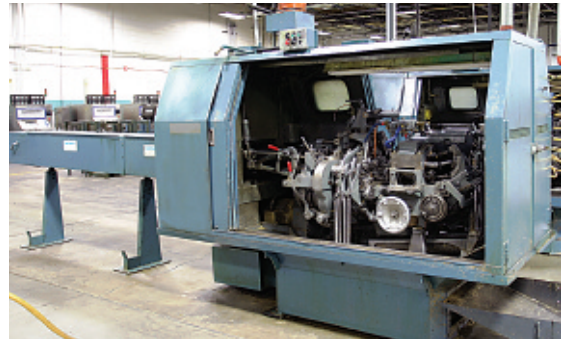
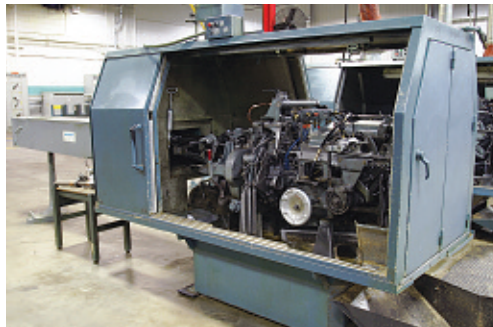
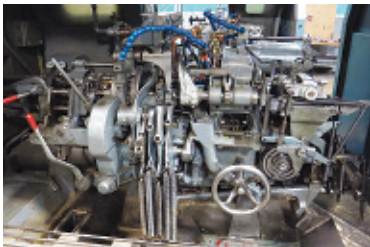
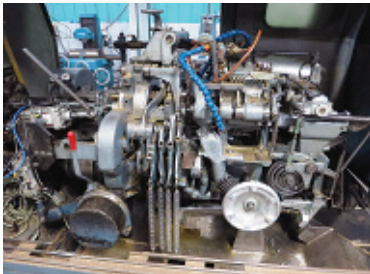
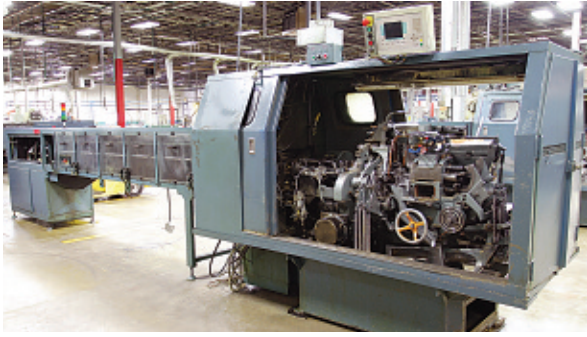
**Online Bidding**

**Sale Date: Wed. March 20, 2013**

**10:00 am CST**



# DAVENPORT AUTOMATIC SCREW MACHINES



**20 DAVENPORTS  
Available**



## 3/4" DAVENPORT Model B 5-Spindle Automatics

- S/N 13255 Pick-off, 4th Pos. Slide, Threading, Enclosure, 1995
- S/N 13061 4th Pos. Slide, Threading, Enclosure, 1994
- S/N 12950 4th Pos. Slide, Threading, Enclosure, 1992
- S/N 12875 4th Pos. Slide, Cucchi Bar Feed, Enclosure, Rebuilt 2004
- S/N 12365 Enclosure, Rebuilt 1996
- S/N 11289 Pick-off (missing parts), Enclosure, New 1984, Rebuilt 1996
- S/N 9488 Pick-off, 4th Pos. Slide, Threading, Enclosure, New 1977, Rebuilt 1989
- S/N 9487 Pick-off, 4th Pos. Slide, Threading, Enclosure, New 1977, Rebuilt 1989
- S/N 8727 Pick-off, 4th Pos. Slide, Threading, Enclosure, New 1975, Rebuilt 1991
- S/N 8726 Pick-off, 4th Pos. Slide, Threading, Enclosure, New 1975, Rebuilt 1990
- S/N 8504 Pick-off, Threading, Enclosure, New 1974
- S/N 8496 Pick-off, 4th Pos. Slide, Threading, Enclosure, New 1974, Rebuilt 1991
- S/N 8238 Pick-off, Threading, Cucchi Bar Feed, Enclosure, New 1974
- S/N 7831 Pick-off, 4th Pos. Slide, Threading, Enclosure, New 1973, Rebuilt 2004
- S/N 6329 Pick-off, 4th Pos. Slide, Threading, Enclosure, New 1968
- S/N 5590 Pick-off, 4th Pos. Slide, Threading, Enclosure, Rebuilt 2004
- S/N 5984 4th Pos. Slide, Threading, Enclosure, Cucchi Bar Feed, Rebuilt 2004
- S/N 2826 Cucchi Bar Feed, Rebuilt 2003
- S/N 13504 Enclosure, New 1996



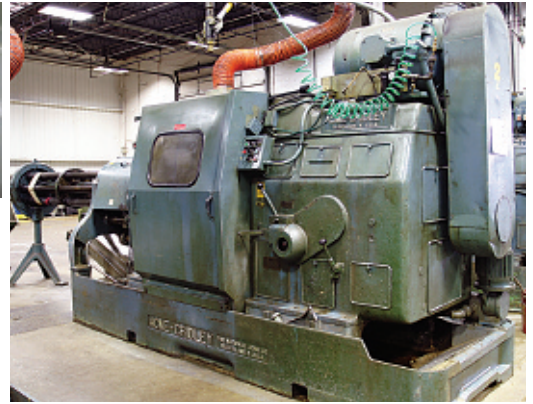
**4325 Frontage Rd. Oak Forest, Illinois**

**Webcast Auction**

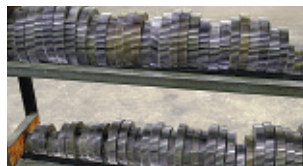
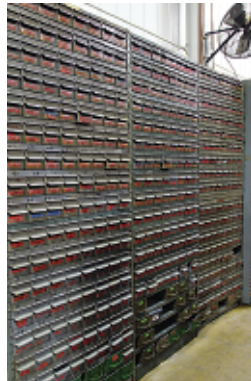


# NATIONAL ACME AUTOMATIC SCREW MACHINES

- 2-5/8" NATIONAL ACME RB-6 6-Spindle Automatic**  
S/N 84298A Hyd. Threading, Accelerated Reaming (rebuilt)
- 2" NATIONAL ACME RB-6 6-Spindle Automatic**  
S/N 41698-X Threading, Acc. Reaming, New 1966 (rebuilt)
- 1" NATIONAL ACME RA-6 6-Spindle Automatic**  
S/N A23388 Pick-off, Threading Attachment



## SCREW MACHINE TOOLING



### Screw Machine Tooling

Collets, Pushers, Die Heads, Cams, Gears, Dovetail Holders, Repair Parts, Spindles, Thread Rollers, Form Tools, Perishable Tooling, etc.

## BAR MARKING MACHINE



**CMT**  
**40-40SD-W9120**  
**Super Duty**  
**Bar Marking**  
**Machine**  
New 2003,  
3/8" to 3"  
Round & Hex,  
210 FPM,  
2-Sided or 4-Sided



## ROTARY TRANSFER MACHINES



**GOVRO-NELSON 12-Station Model T219 Rotary Transfer Machine**  
Drilling & Tapping Heads, 12-Station Trunnion, 2-Jaw Chucks S/N D15010

**GOVRO-NELSON 8-Station Rotary Transfer Machine**  
(4) Horiz. & (3) Vertical Heads, 8-Station Trunnion, 2-Jaw Chucks S/N D12770

**Online Bidding**

**Sale Date: Wed. March 20, 2013**

**10:00 am CST**



## PARTS WASHERS



**NEW  
2004**

### (3) RANSOHOFF Lean Jet Rotary Basket Parts Washers

New 2004, with Oil Separators, Agitation, Spray Impingement, Immersion, Heated Blow-off Drying, 3/60/480 S/Ns 4396, 4429, 4428



**KLEENTEC  
Spraymaster  
Model KT9200  
Rotary  
Parts Washer  
(2) Baskets  
S/N 920184**



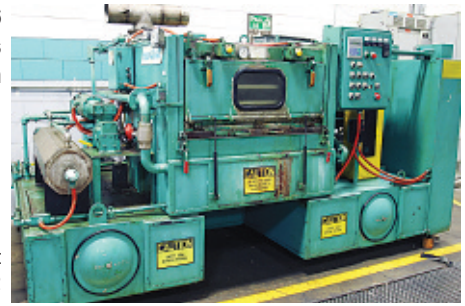
**ALSO:  
Cecor Sump  
Sucker**

### RANSOHOFF Inclined Conveyor Small Parts Washer

Stainless, 1st Stage Clean, 130°F, Rust Inhibitor, 2nd Stage Blow Dry, Oil Separator S/N 4402

### RANSOHOFF HC-6 Immersion Parts Cleaning System

New 1997,  
(6) Baskets per Cycle,  
60 per Hour, Agitation,  
Spray Impingement,  
Immersion,  
Heated Blow-off Drying,  
12" x 18" x 6" Basket  
S/N H2632



### FMT TD3-100 Model 8RB50 Rotary Basket Stainless Parts Washing System

1995, (8) Baskets, Wash, Spray,  
Immersion, Rinse, Dry,  
Automatic, 50 lbs. per Basket



### CAE RANSOHOFF Immersojet Parts Washer

1997, Oil Separation, Agitation,  
Spray Impingement, Immersion,  
Heated Blow-off Drying,  
(6) Baskets per Cycle S/N 3107

## CHIP PROCESSING SYSTEMS



**MAYFRAN Continuous Chip Processing System** Elevating Dump Hopper, Hopper with Elevating Auger Conveyor, Chip Shredder, Parts Separator, TD-3000 Continuous Separator, Pneumatic Discharge S/N 917072



### PRAB Continuous Chip Processing System

Elevating Dump Hopper, Elevating Screw Conveyor, Parts Separator, Continuous Chip Separator, Pneumatic Discharge S/N S-03583-GA

## FORKLIFTS



**NEW  
2007**

### 12,000 lb. MITSUBISHI FGC55KS LP Forklift

2007, 3-Stage Mast, Cushion Tires,  
161" Lift, Side Shifter, Safety Cage,  
83.5" Height (mast down),  
GM V6, 92 HP S/N AF88A10239



**(4) KODIAK  
12K510B3  
24V Electric  
Battery  
Chargers**

**ALSO: GNB FER100 18-1050  
30 Amp 36V Battery Charger**



### 6500 lb. YALE ERC080HDN36SF084 36 Volt Electric Forklift

120" Lift, Solid Tires S/N A839V02328V



### 5000 lb. MITSUBISHI FGC25N LP Forklift

2006, Solid Tires, 187" Lift,  
Side Shifter, Safety Cage  
S/N AF82F03326

**4325 Frontage Rd. Oak Forest, Illinois**

**Webcast Auction**



## COLD SAW



**WAGNER WAM90**

**Automatic Hydraulic Non-Ferrous Cold Saw**

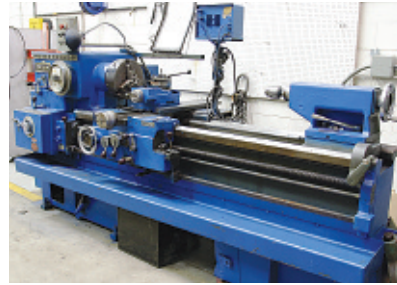
New 1994, 12' Heavy Duty Feed Magazine, 5/8" to 3-1/2" Cap., 20 HP, 315mm Blade S/N 1282

## MISC. MACHINERY & EQUIPMENT



**(2) 3/32" to 2" RUSH  
Model 252 Drill Grinders**

6-Jaw, Even or Odd Flutes, Straight or Taper, 40° to 180°, S/Ns 2833 (2007), 2437 (2000)



**17" x 48" LODGE & SHIPLEY  
Toolroom Engine Lathe**

1500 RPM, 12" Chuck, Threading, Taper Attach., DRO S/N 48509



**(2) BRIDGEPORT Mills**

1-1/2 HP V/S: S/N BR110006  
1 HP: S/N BR114267

## INSPECTION EQUIP.



**Mitutoyo PH-3500**

**Optical Comparator Profile Projector**

Digital Readouts S/N 800241

**Cabinet with Thread & Plug Gauges**



**15" x 36" LEBLOND Regal  
Toolroom Engine Lathe**

1800 RPM, Threading S/N 3C513



**6" x 18" K.O. LEE  
Surface Grinder**

Walker Electromagnetic Chuck S/N 26413



**6" x 18" HARIG  
Surface Grinder**

Walker Electromagnetic Chuck

**ALSO AT AUCTION:**

**HARDINGE DV59 Toolroom Lathe** S/N 24453

**6" x 18" DOALL DC618 Hydraulic Surface Grinder**

**AMW Surface Grinder** 6" x 18" Chuck, Dresser

**R.O. Form Relief Tool Grinder** Univ. Form Relieving Fixture



**GOVRO 2-Spindle Drill & Tap Machine**

5-Station Index Table, 5C Hardinge Collet Chucks • **16" DOALL Vertical Band Saw**

**MASTER MACHINE HEAD Slotting Saw** Designed by Dana Weatherhead, with Coolant System, PLC • **MILLER 250 Amp Arc Welder**

**UNITED AIR SPECIALIST Smog Hog Air Cleaners, (3) Model SHW-20, (4) Model SG-4S-H** New 2003 - 2005, 260 Volt

**30" x 60" MARATHON Model V6030HD Heavy Duty Hydraulic Baler** S/N 124540 • **(2) 4500 lb. PRESTO P3 Rotating Table Scissor Lift Tables**

**3000 lb. BUSHMAN Rotating Table Scissor Lift Table** • **5 Ton SHAW BOX Bridge Crane** Underhung, 21' Span, 270' (est.) Steel I-Beams & Electrics

**TURBO Model 7506-8012 In-Ground Conveyor System** Approx. 500' of Conveyor S/N 900059 • **(4) Liquid Storage Tanks** • **(5) Digital Scales**

**(6) Large JESCO Model 211352 Self Dumping Scrap Hoppers** 2 cu. yd., 6000 lb. Capacity • **2 Ton ROGER Hydraulic Crane** (engine hoist)

**3M-MATIC Model 200A Case Sealing Tape Packaging Machine** Adjustable, Type 39600 S/N 10731, 50170 • **ZEBRA Label Printers**

**SIGNODE FPS9Y35 Spiralgrip Pallet Wrap Machine** • **TENNANT Model 7100 Floor Cleaner** • **NOBLES Falcon 2800 Plus Floor Cleaner**

**Plant Accessories & Misc. Equipment** Pallet Rack, Benches, Cabinets, Maintenance Supplies, Hand Tools, etc.

**Online Bidding**

**Sale Date: Wed. March 20, 2013**

**10:00 am CST**



## AIR COMPRESSORS



### (2) 75 HP GARDNER DENVER Electra-Saver II Rotary Screw Type Air Compressors

- (1) Model EBMSLA S/N M64797
- (1) Model EBMSLC S/N U41386

### 50 HP GARDNER DENVER Electra Screw Model EDE9914 Rotary Screw Type Air Compressor

3/60/460V S/N S183279



## OFFICE FURNITURE & EQUIP.



### Office Furniture & Equipment

Modern Work Stations, Conference Table & Chairs, PC Computers, etc.

### DIRECTIONS FROM O'HARE AIRPORT:

Merge onto I-190 E. Proceed for 2.3 miles and merge onto I-294 S via exit 1D toward Indiana. Proceed for 1.4 miles and take I-294 S for 32 miles. Merge onto W 159th St/US-6 W. Proceed for 2.3 miles. Turn left onto Pulaski Rd/Crawford Ave for about .7 miles. Turn right onto Frontage Rd. 4325 Frontage Road is on the left.

## Webcast Online Bidding Instructions

1. Join our website at [premierarg.com](http://premierarg.com) using the First Time Visitors link to receive your User I.D. & Password.
2. Using your User I.D. & Password, register for any Webcast Live Auction.
3. Contact Premier to establish credit 24 hours prior to sale, send us a check with bank letter, wire transfer funds or sign credit card agreement. Call Maribel 312-280-1234.
4. When auction is live, enter by logging in – download software if required.

**Internet Bidders must register a minimum of 24 hrs. prior to Auction**

## Proxy Absentee Bidding Instructions

Follow same instructions as above. Enter the auction, select the lot number, then enter your Absentee/Proxy Bid. Your bids will be recorded, but will not be executed until you have established credit for the auction. It's fast, easy and confidential. You can also call Premier's office to arrange a Proxy Bid by calling 312-280-1234. In either case, we will bid on your behalf on the auction floor.

Buyer's Premium 15% On Location

Buyer's Premium 18% Webcast

## Onsite Terms & Conditions of Sale:

**REGISTRATION:** All bidders must register prior to the SALE, at which time you will be presented with a bidder's number. All bidders are required to register and give full identification and establish credit with the Auction Company prior to the beginning of the auction.

**TERMS:** A \$200 cash deposit is required to register prior to the auction sale. The deposit will be returned in its original form if the Buyer is not a successful bidder at the auction. If Buyer is the successful bidder, Premier will apply the deposit to the purchase price. All purchases must be paid in full on the day of sale by cash, company check, cashier's check or bank wire. **Personal & Company checks must be accompanied by a bank letter of guarantee** (see website for sample bank guarantee letter). Checks are to be made payable to: Premier Asset Recovery Group. Wire transfer instructions are available on Premier's Website and at the auction site. All invoices must be checked at the time of sale as no adjustments will be made thereafter. All legal fees and charges due to nonpayment will be the responsibility of and paid by the purchaser. The purchaser shall not be entitled to possession of any part or parts of any of his purchases until the total purchase price of all his purchases has been fully paid. All sales are final. Successful Internet bidders will be notified by e-mail within 24 hours of auction ending. The Internet bidder's payment must be received 24 hours after receipt of the e-mail notification to pay for their items.

**WARRANTY:** All items are sold on "as is - where is", "in place", "with all faults" basis with no conditions or warranties, whether expressed, implied, statutory or otherwise, including without limitation, warranties or conditions as to title, description, fitness for purpose, quantity, quality, merchantability, state, condition, location or otherwise. Any descriptions are meant only as a guide. The Auctioneer does not warrant the accuracy, genuineness, authenticity, description, weight, count or measure of any listing specified herein. The Auctioneer provides no warranty or guarantee either expressed or implied in the description or nomenclature. Premier Asset Recovery Group assumes no liability for error or omissions associated with the auction sale. The buyer does hereby assume and does agree to indemnify and hold the auctioneer and seller harmless from any future claim which shall pertain to the fitness or use of the asset being purchased. All sales are final.

**BUYER'S PREMIUM:** The Buyer's Premium is a commission charge paid by the Buyer. The Buyer's Premium is part of Premier Asset Recovery Group's compensation for auction services. Premier shall charge and collect for its own account a buyer's premium from each successful bidder in addition to the purchase price as bid.

Additional Terms & Conditions Apply - See Website at [www.premierarg.com](http://www.premierarg.com)

★ For Online Bidding Instructions, See Online Terms & Conditions ★

**4325 Frontage Rd. Oak Forest, Illinois**

**Webcast Auction**



# PUBLIC AUCTION SALE

## ANDERSON FITTINGS

4325 Frontage Road  
Oak Forest (Chicago), IL 60452

**SALE STARTS 10:00 am CST Wednesday, March 20, 2013**

**INSPECTION: Tuesday, March 19, 8:00 am - 5:00 pm**



77 East Palatine Road  
Prospect Heights, IL 60070

[www.premierarg.com](http://www.premierarg.com)

PRESORTED  
FIRST-CLASS MAIL  
U.S. POSTAGE  
**PAID**  
Brainerd, MN  
Permit No. 472

# PUBLIC AUCTION SALE

**HUGE PRECISION AUTOMATIC SCREW MACHINE PLANT**

## ANDERSON FITTINGS

4325 Frontage Road  
Oak Forest (Chicago), IL 60452

(12) NEW BRITAIN Model 81, 51, 52 & 62 Automatic Screw Machines  
(20) DAVENPORT Model B Automatic Screw Machines with Enclosures  
(3) NATIONAL ACME Automatic Screw Machines • Bar Marking Machine  
Parts Washers • Continuous Chip Systems • WAGNER Automatic Cold Saw  
Screw Machine Tooling • Inspection • Forklifts • Factory Equipment • MORE



15% On Location and 18% Webcast buyer's premium. Auctioneer will accept cash, company check, personal check with bank letter, cashier's check or wire transfer.